



PACP
PORTUGUESE AMERICAN CITIZENSHIP PROJECT

A NON-PARTISAN INITIATIVE TO PROMOTE CITIZENSHIP AND CIVIC INVOLVEMENT

**MT. CARMEL PARISH
NEW BEDFORD, MA**

**EVALUATION
OF
THE 2012 ELECTIONS**

**PREPARED
APRIL 8, 2013**

Supported by Luso-American Foundation
Government of the Autonomous Region of the Azores
Business and Community Leaders in the Portuguese American Community

REPORT CONTENTS

Statistics and Summary of Work	2
Results	2
Results Graphs	3
Voter Turnout Summary	3
Voter Turnout by Age	4
Voter Turnout by Age and Gender	4
Voter Turnout by Age and Gender	5
Voter Turnout - November 2012 by Gender and Party	6
Voter Turnout – 2008 vs. 2012 Presidential Elections	7
Appendices	8
Registered Voters by Age and Gender	9
Registered Voters by Age and Party	10
Registered vs. Actual Voters by Age and Gender	
November 2012	11
Registered vs. Actual Voters	12
Actual Voters by Gender and Party – November 2012	13
Voted in both 2008 and 2012 Presidential Elections	14
Voted in all last three elections	14

Key Statistics – 2012

Voter turnout data received from the New Bedford Board of Election Commissioners, February 28, 2013.

Mt. Carmel Parish (*City of New Bedford in italics*)

- All Household Members registered to vote: 1,256 (51,575)
- Voter Turnout - March 2012: 5.8% (8.5%)*
- Voter Turnout - September 2012: 18.3% (14.8%)
- Voter turnout – November 2012: 74.1% (58.8%)

* No reminder postcards were sent out for the March, 2012 election.

Summary of Work

Mt. Carmel Parish has been an active participant in the Portuguese American Citizenship Project since 2002.

For the September and November, 2012 elections, postcards were sent out to each parish household where at least one household member was registered to vote. No cards were sent out for the March, 2012 election.

Results

Mt. Carmel's voter turnout for the September and November 2012 elections was consistently higher than citywide turnout among all age groups. The Mt. Carmel turnout for the September Primary Elections was 18.3%, as compared to the city turnout of 14.8%. The Mt. Carmel turnout for the November General Elections was 74.1%, which was significantly higher than the citywide turnout of 58.8%.

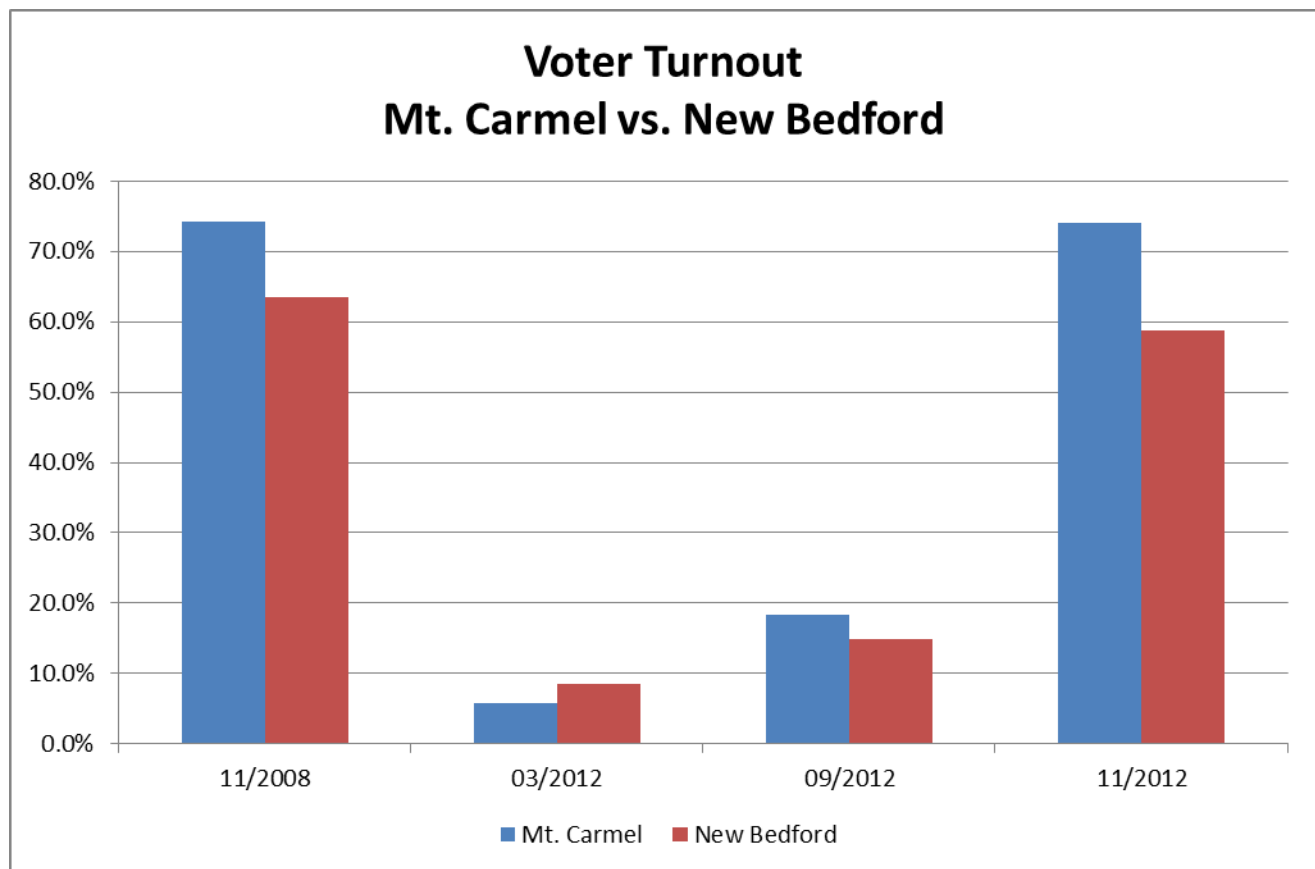
As noted above, no reminder cards were sent out for the March 2012 local election. The Mt. Carmel voter turnout in March was 5.8%, which was lower than the citywide turnout of 8.5%.

Voter turnout is fairly consistent across age groups, with the highest turnout between the ages of 50 and 70. Turnout for Mt. Carmel voters younger than age 50 tended to be much higher than the citywide turnout for those same age groups for the September primary election, while turnout for Mt. Carmel voters in the November election tended to be about 10% higher than citywide turnout across all age groups.

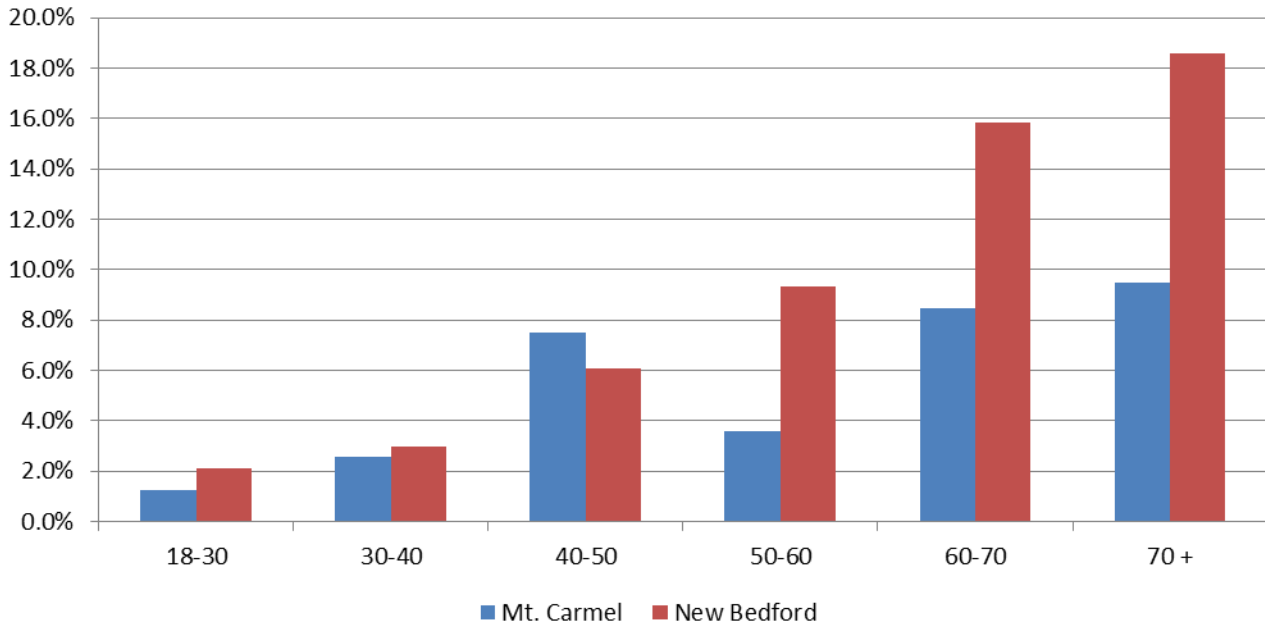
Registered voters by gender between 30 and 70 tended to be fairly equal, while women tended to have a higher voter turnout than men across most age groups. The one exception was the 60 – 70 year age group in the November 2012 election where voter turnout for men was slightly higher than women.

The following graphs summarize voter turnout by age, gender and political party affiliation.

Results Graphs

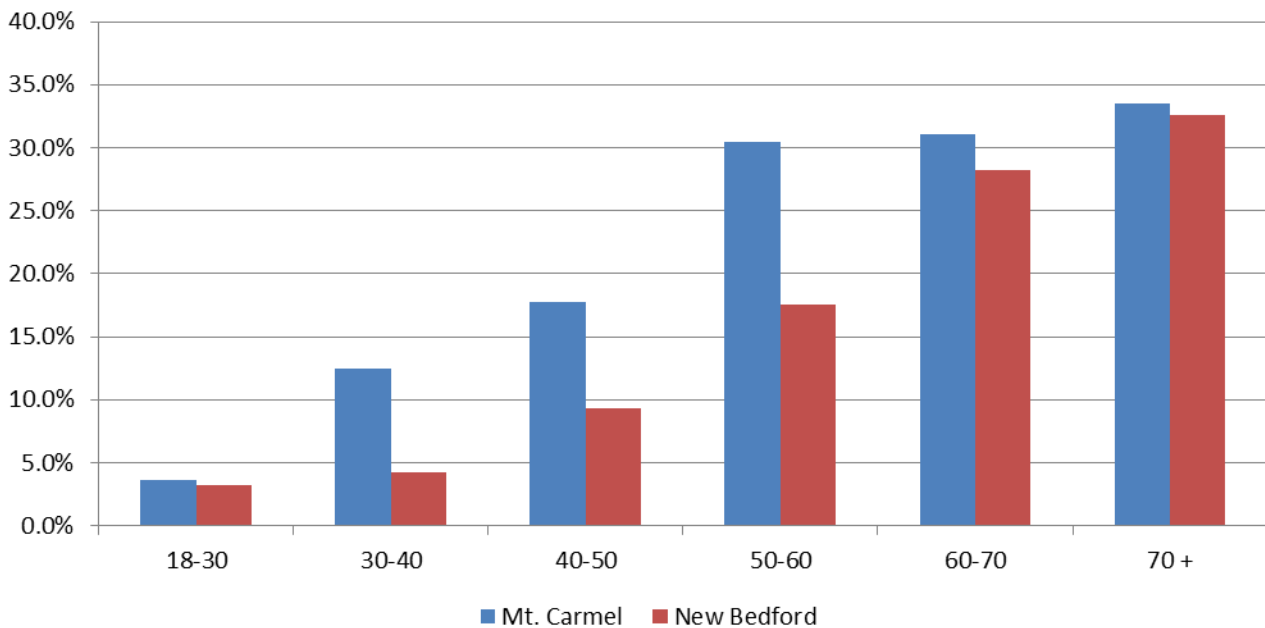


Turnout By Age - March 2012 Mt. Carmel Parish vs. New Bedford

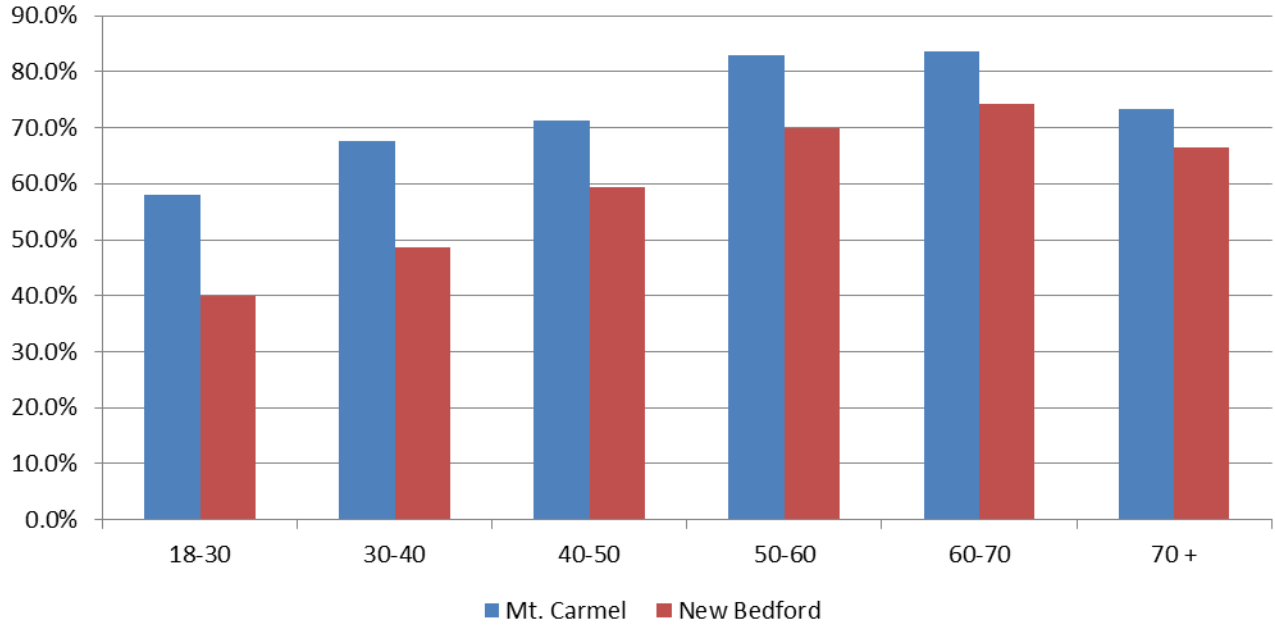


* Reminder postcards were not sent out for the March, 2012 election.

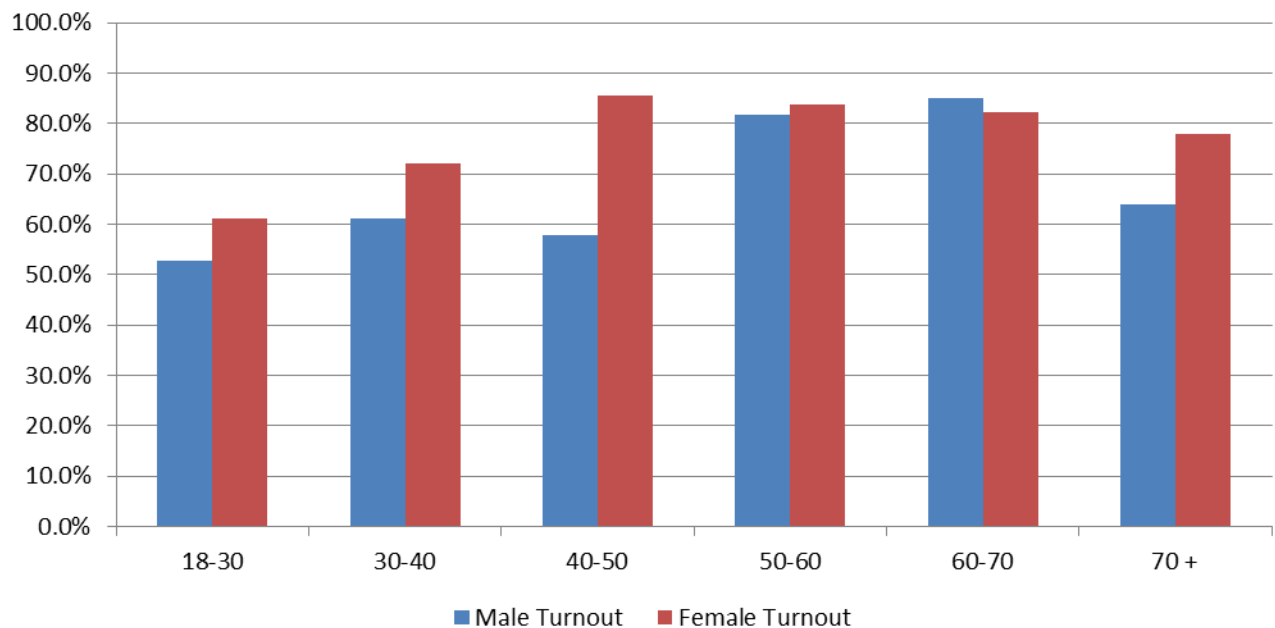
Turnout By Age - September 2012 Immaculate Mt. Carmel vs. New Bedford



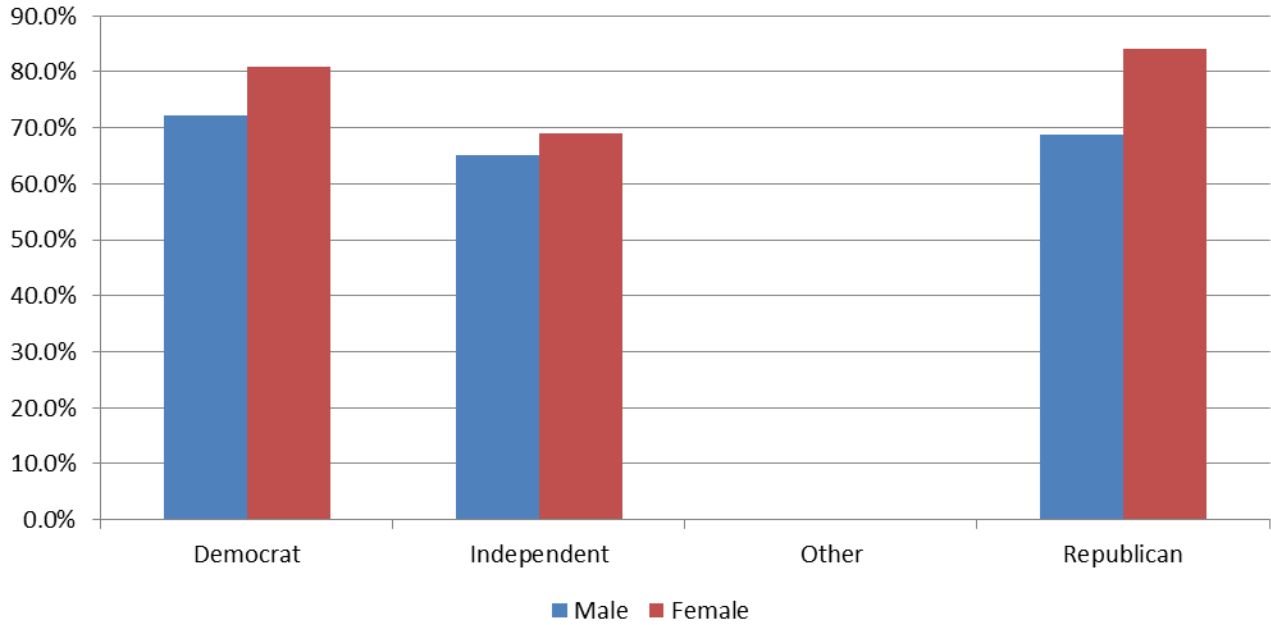
Turnout By Age - November 2012 Mt. Carmel Parish vs. New Bedford



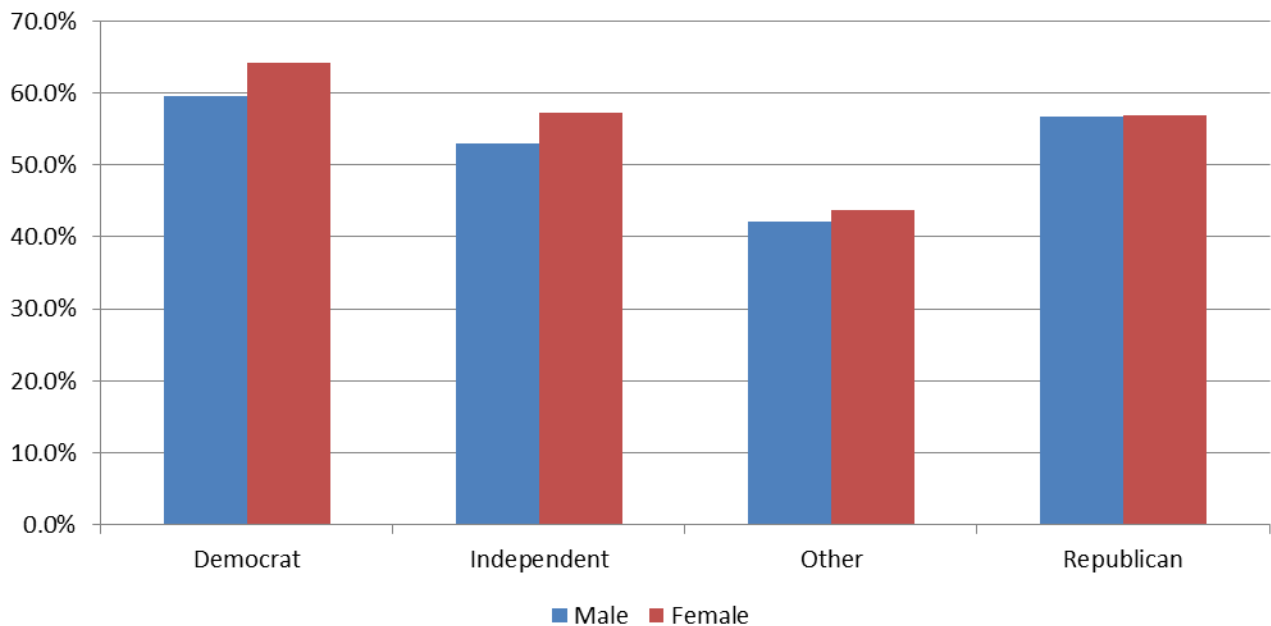
Voter Turnout by Age and Gender November 2012 Mt. Carmel Parish



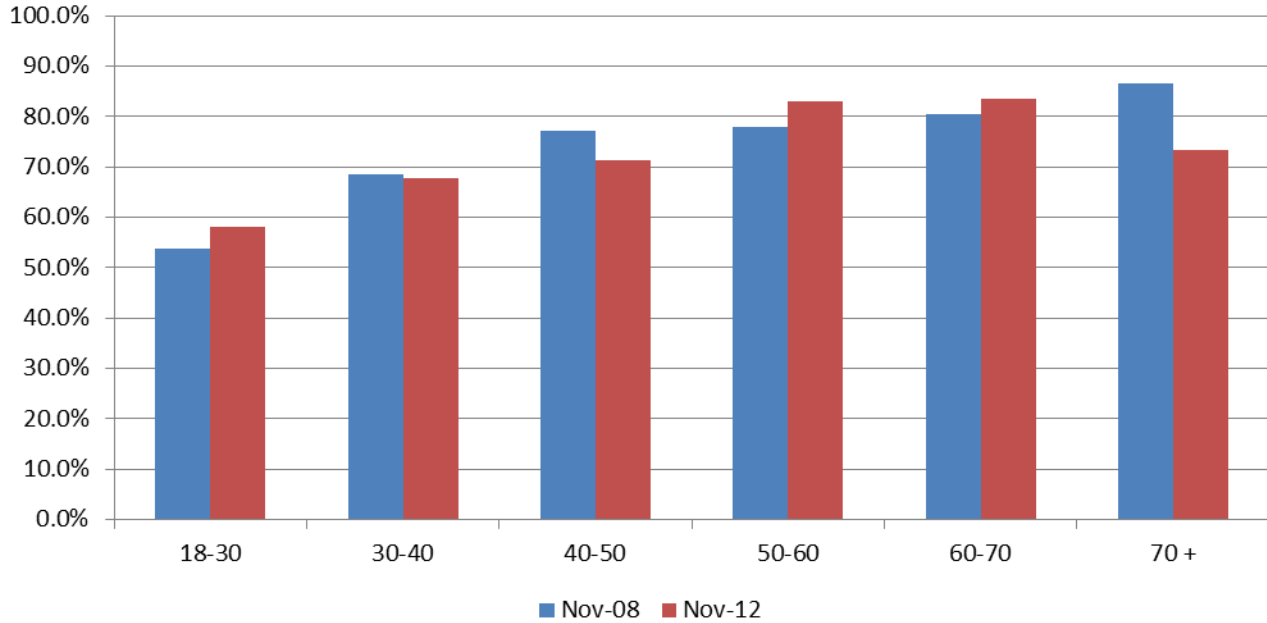
Voter Turnout - November 2012 Election Mt. Carmel By Gender and Party



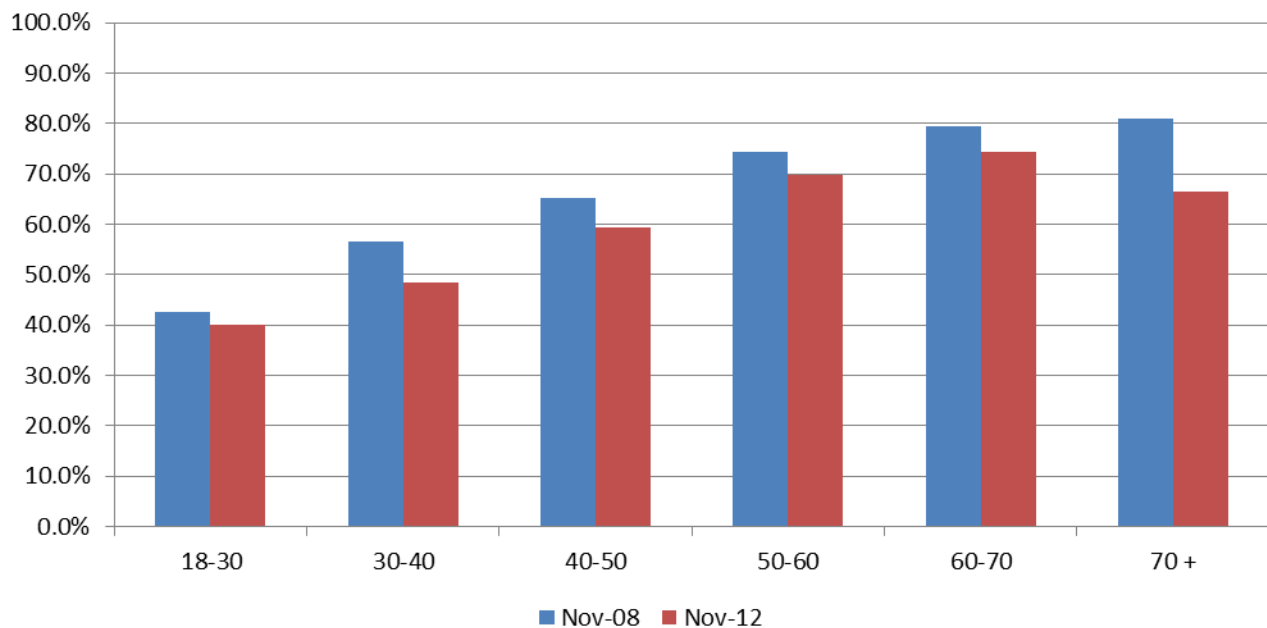
Voter Turnout - November 2012 Election New Bedford By Gender and Party



Voter Turnout 2008 vs. 2012 Presidential Elections Mt. Carmel by Age



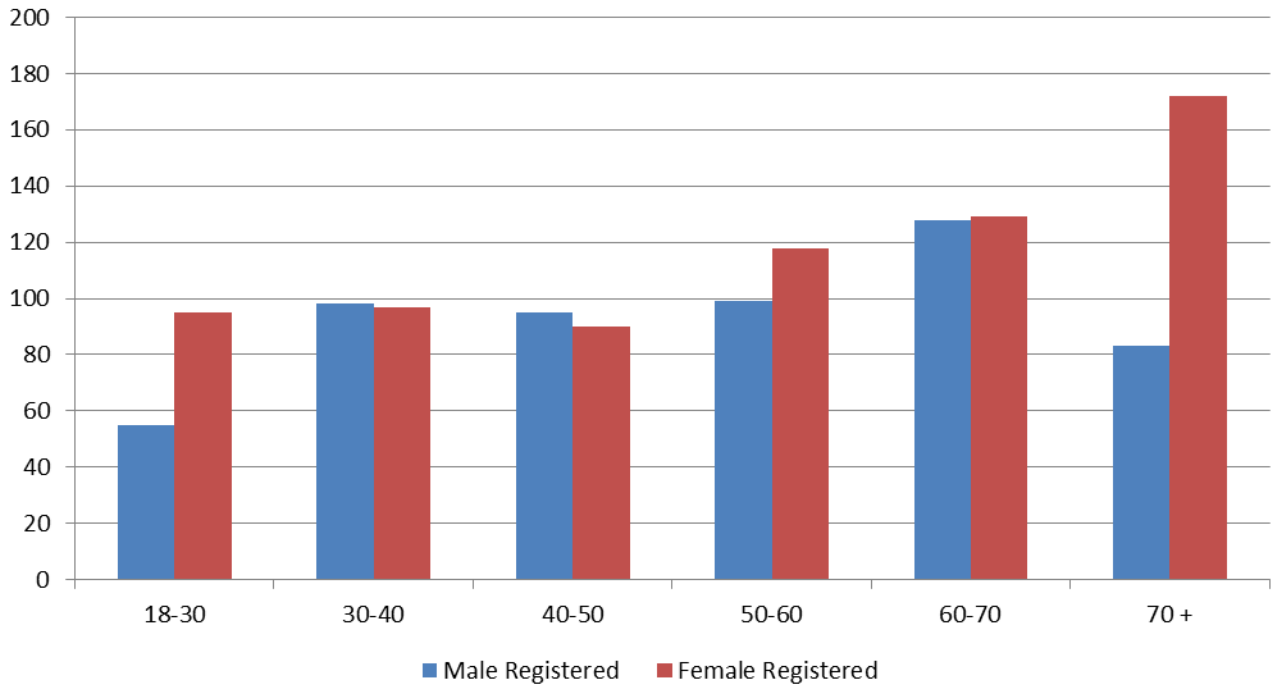
Voter Turnout 2008 vs. 2012 Presidential Elections New Bedford by Age



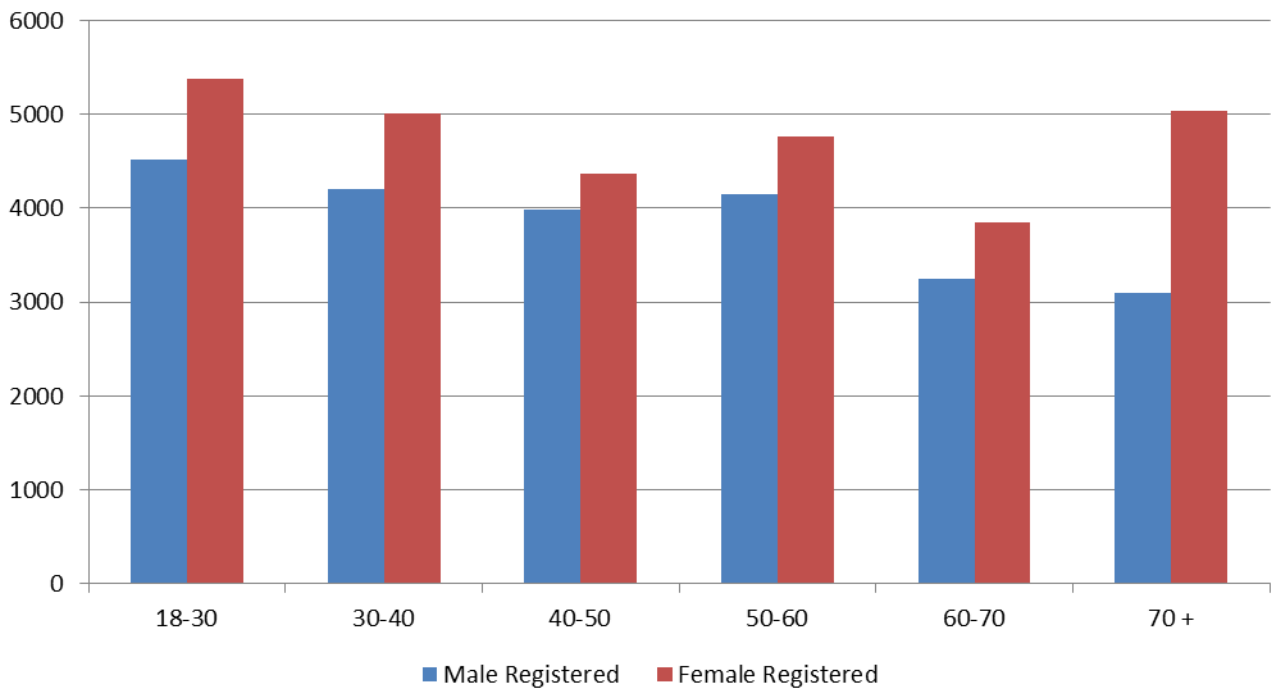
Appendices

Registered Voters by Age and Gender	9
Registered Voters by Age and Party	10
Registered vs. Actual Voters by Age and Gender	
November 2012	11
Registered vs. Actual Voters	12
Actual Voters by Gender and Party – November 2012	13
Voted in both 2008 and 2012 Presidential Elections	14
Voted in all last three elections	14

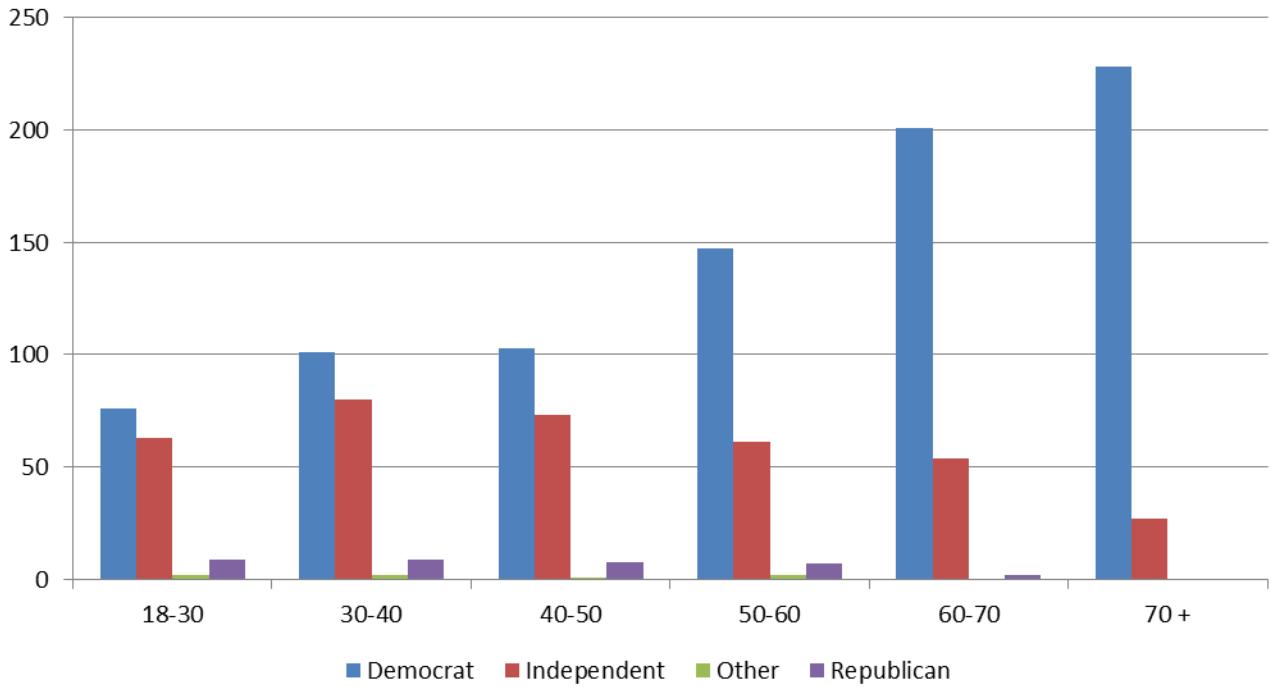
Registered Voters by Age and Gender Mt. Carmel Parish



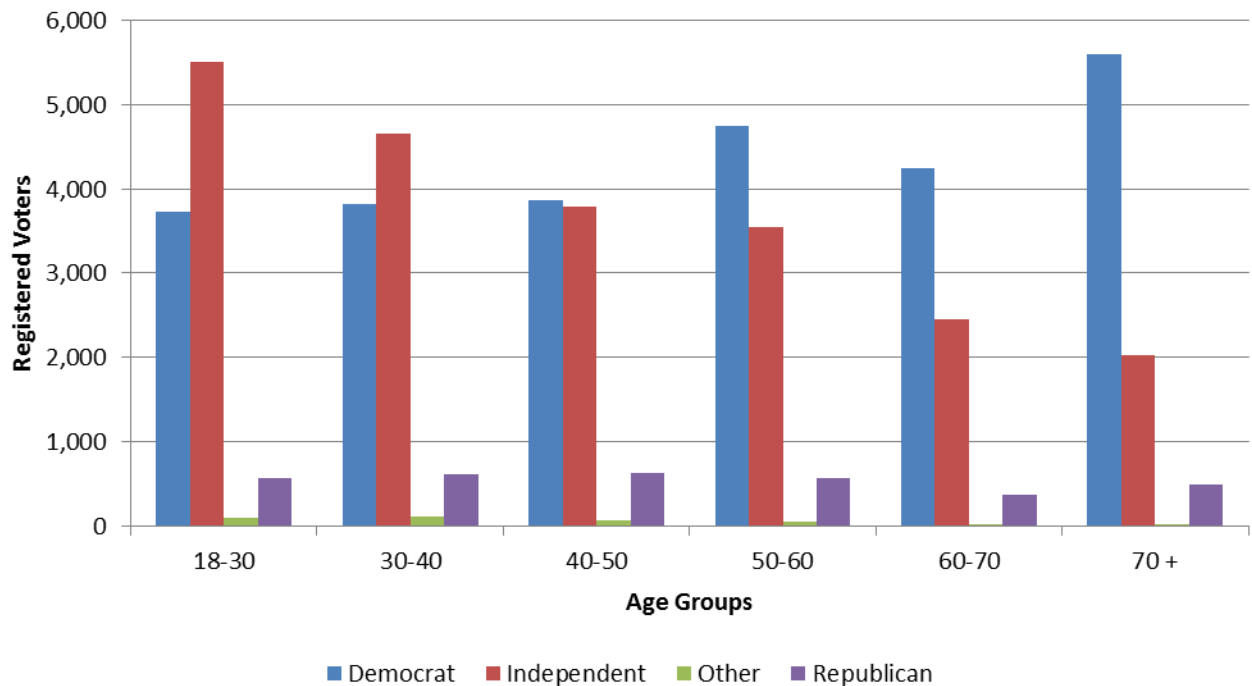
Registered Voters by Age and Gender New Bedford



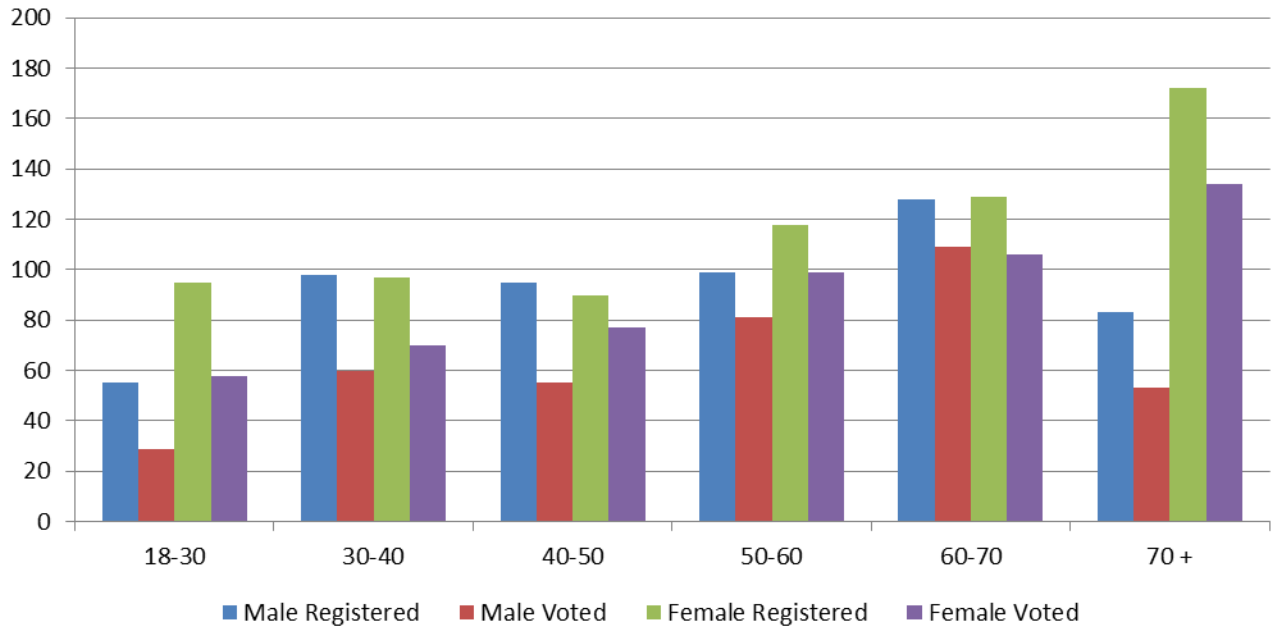
Registered to Vote by Age and Party Mt. Carmel - November 2012



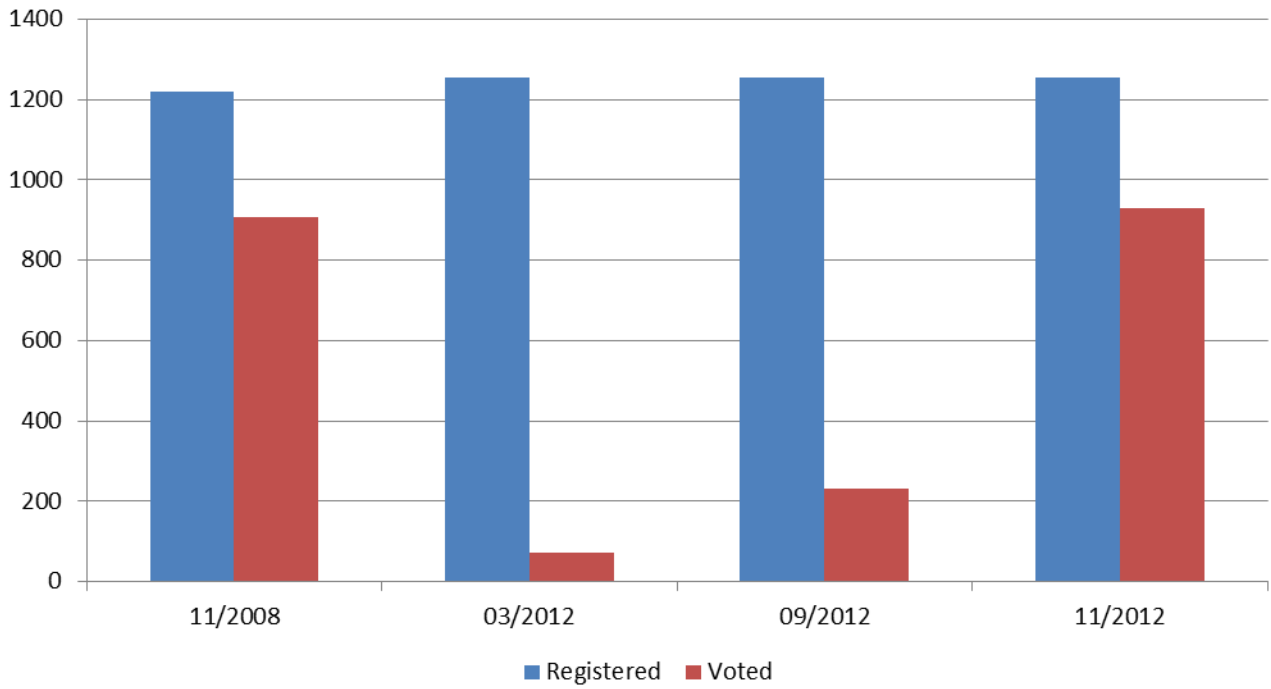
Registered Voters by Age and Party New Bedford



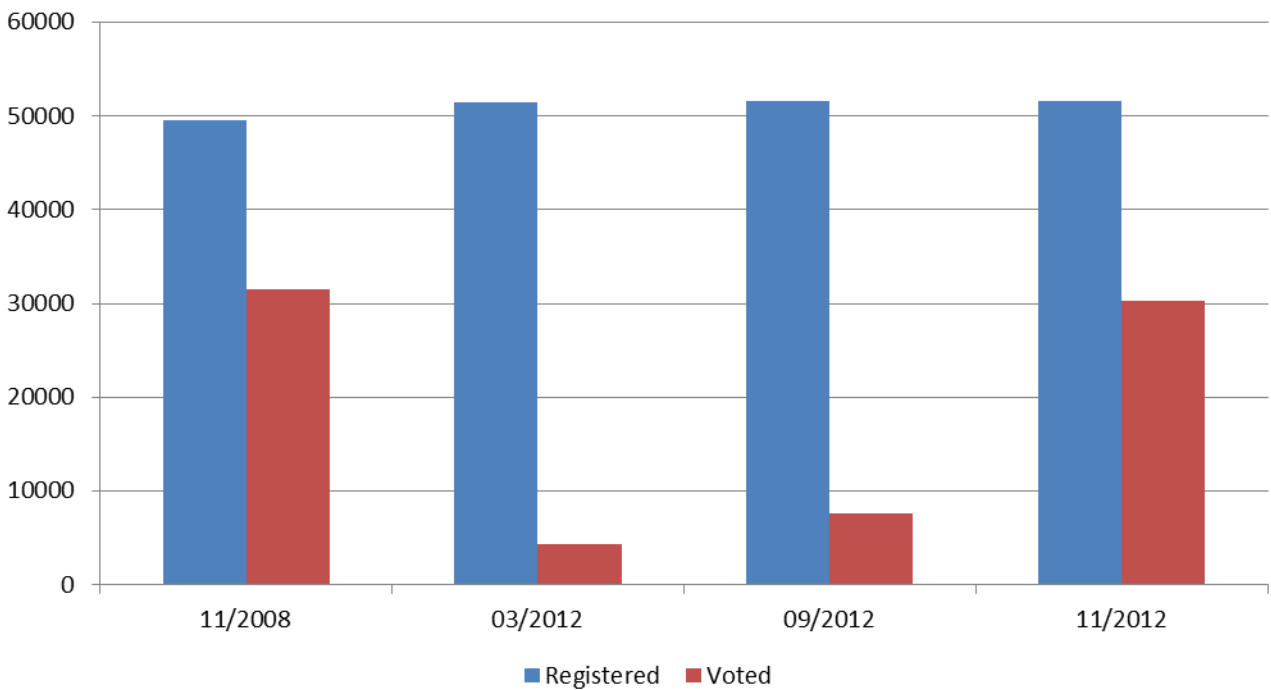
Voter Turnout - November 2012 Mt. Carmel Parish By Age and Gender



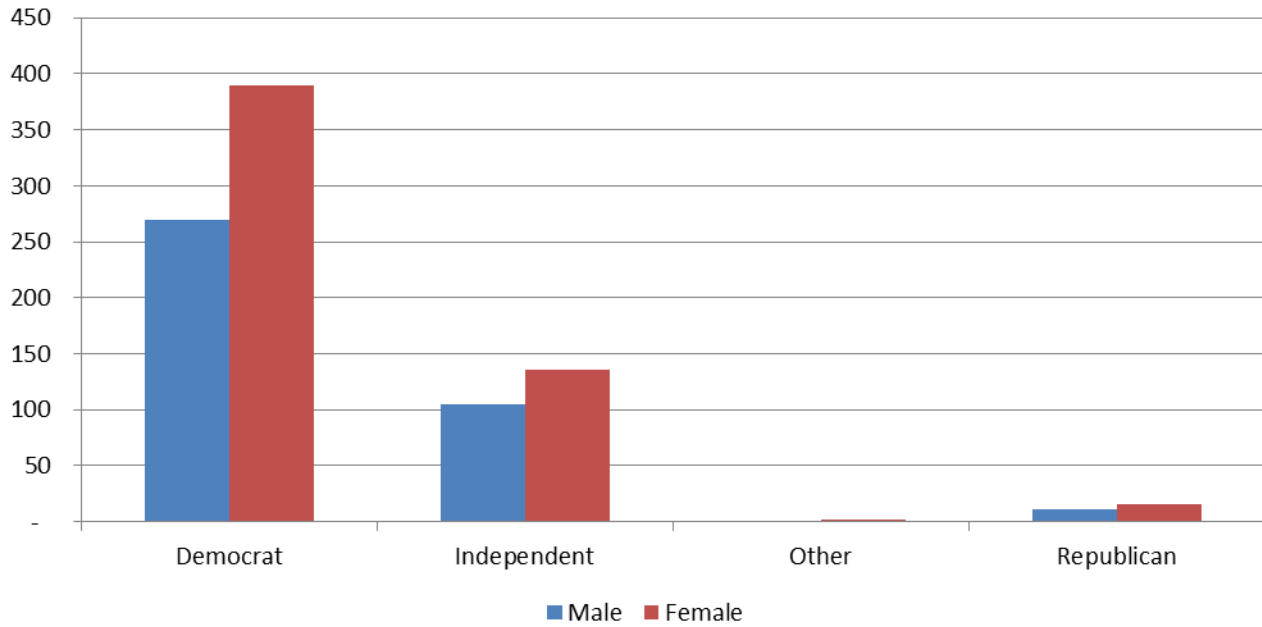
Registered Voters vs. Actual Voters Mt. Carmel Parish



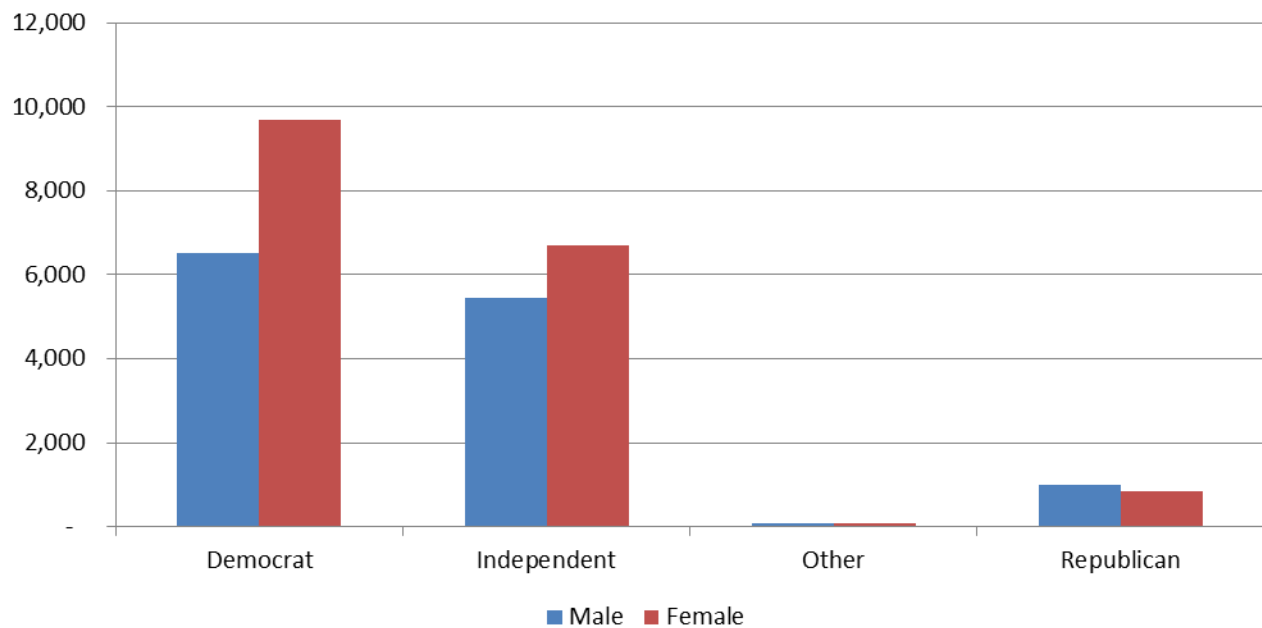
Registered Voters vs. Actual Voters New Bedford



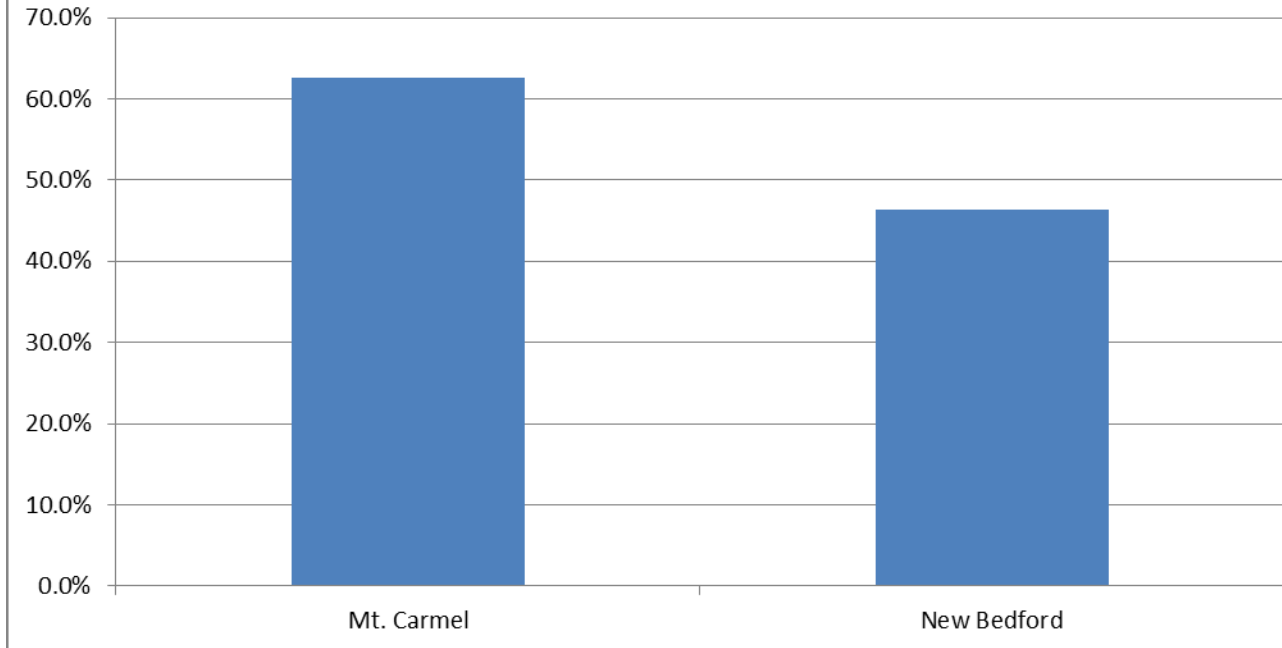
Voted in November 2012 Election Mt. Carmel Actual Voters By Gender and Party



Voted in November 2012 Election New Bedford Actual Voters By Gender and Party



Voter Turnout
Voted in Both 2008 and 2012 Presidential Elections
Mt. Carmel vs. New Bedford



Voter Turnout
Voted in Last 3 Elections
Mt. Carmel vs. New Bedford

